

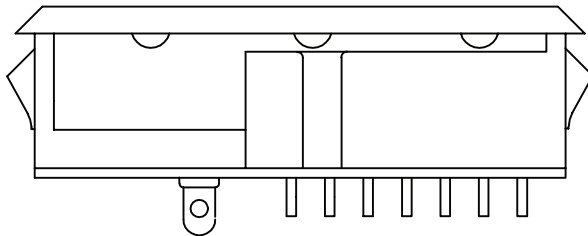
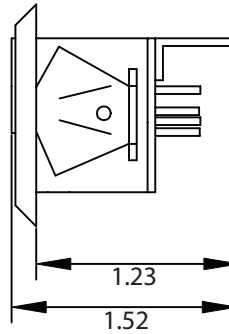
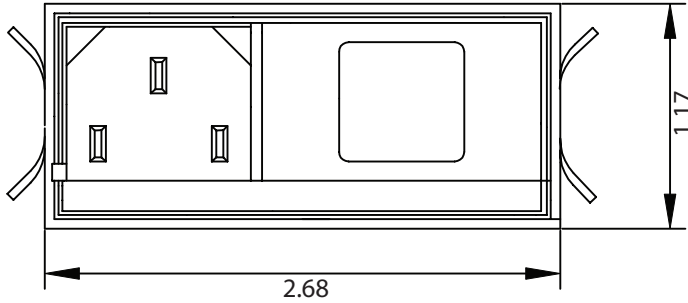
THESE DRAWINGS ARE THE PROPERTY OF QUALTEK ELECTRONICS AND NOT TO BE REPRODUCED FOR OR COMMUNICATED TO A THIRD PARTY WITHOUT THE EXPRESS WRITTEN PERMISSION OF AN OFFICER OF QUALTEK ELECTRONICS.

REVISION			
REV.	DESCRIPTION	DATE	APPROVED
B	RoHS Compliancy	06-01-06	DP

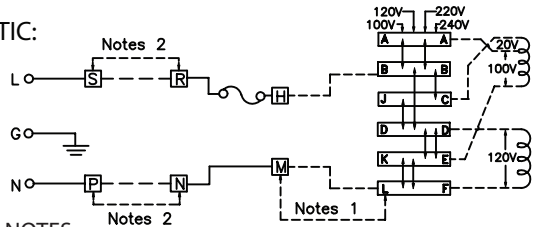
PHYSICAL DIMENSIONS:



PANEL CUTOUT



ELECTRICAL SCHEMATIC:



- NOTES:
1. JUMPER REQUIRED IF ONLY SPST POWER SWITCH IS USED.
 2. JUMPER REQUIRED IF NO INPUT FILTER IS USED.

ELECTRICAL CHARACTERISTICS:

- 1-1. VOLTAGE RATING.....115/250VAC
- 1-2. CURRENT RATING
 - A. @ 115 VAC15 A RMS MAX
 - B. @ 250 VAC5 A RMS MAX
- 1-3. OPERATING FREQUENCY..... 50-60Hz
- 1-4. LEAKAGE CURRENT EACH LINE TO GROUND
 - A. AT 115VAC 60Hz..... 2uA MAX.
 - B. AT 250VAC 50Hz..... 5uA MAX.
- 1-5. HIPOT RATING (FOR ONE MINUTE)
 - A. LINE TO GROUND.....2250 VDC
 - B. LINE TO LINE.....1450 VDC
- 1-6. MINIMUM INSULATION RESISTANCE: @ 500VDC
 - A. LINE & NEUTRAL TO GROUND.....10M OHM
 - B. LINE TO NEUTRAL.....10M OHM
- 1-7. VOLTAGE SELECTOR CARD: 100, 120, 220 OR 240 VAC INPUT VOLTAGE
- 1-8. RoHS COMPLIANT

PLASTIC CASE
 SNAP-IN PANEL THICKNESS: 0.04~0.063IN
 PANEL THICKNESS: 0.06~0.09IN
 FLAMMABILITY CLASS UL94V-0

CONTROLLED

		Qualtek Electronics Corp. PPC DIVISION		
Dim range (mm)	Tolerance +/- (mm)	Part Number: 760-16/001		RoHS Compliant
		Description: MULTI-FUNCTION MODULE		
0-1	0.15		UNIT: in	REV. B
1-6	0.20			
6-18	0.30			
18-50	0.50			
50-120	0.70	Drawn / Date	Checked / Date	Approved / Date
120-250	0.90	B.ZHANG 09-15-04	09-15-04	JJH / 09-15-04
250-500	1.20			